



## Customer self-service is an expectation.

Whether you're a retailer, wholesaler, or manufacturer or even if you don't sell products, your customers want the ability to help themselves. Organizations using Sage 300 can offer this high level of customer service quickly, and affordably with the North49 Customer Portal.

**Your Customer Portal will reflect your company persona with a welcoming message and easy to use, intuitive user experience.**



**You can offer customers  
a simple click to pay link  
on your invoices**

Sample Company Ltd.  
Self-Serve Powered by North49

1-888-559-1115 | www.north49.com Login

### Click To Pay

☒ Invoice ☐ Order ☐ Quote ☐ Unallocated

Customer Number: 1500 Customer Name: Custom Comfort

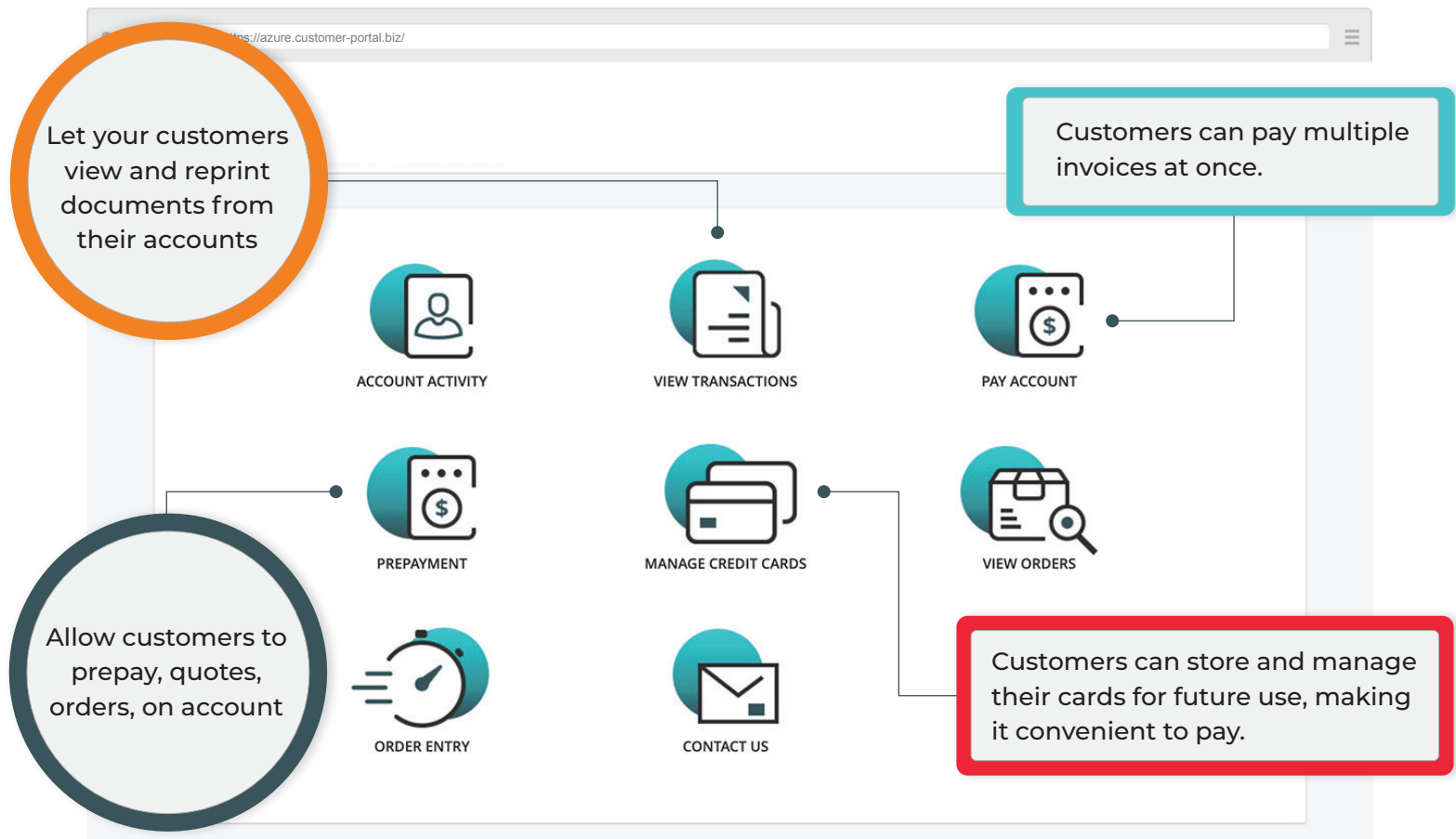
Invoice Number: IN0000000000049 Invoice Date: 05/28/2020

Invoice Amount: \$934.85

Select Payment Option  
☒ CC ☐ CHECK / ACH

PAY INVOICE

Or go with the full solution that offers all available functionality. The **FULL SOLUTION** includes:



- View of account details
- View of all relevant documents
- Reprint of invoices & other documents
- Payment of invoices online
- Stored credit card capabilities (card token) for added convenience
- Prepayments on quotes, orders, or on account

- Quick Order Entry
- A Merchant Administration Portal with:
  - Usage Statistics
  - User Management
  - And much more
- All in real-time

# Choose the components that are **Right for You**

## ANNUAL SUBSCRIPTION

### CUSTOMER PORTAL

**\$1,495**  
(\$1,895 CAD)

- View Account Details
  - + Account Summary
  - + Transactions
  - + Orders
  - + Much More
- Reprint Documents
  - + Invoices
  - + Orders
  - + Any AR Document (you choose)
- Pop up notifications
- Your Logo
- Your Welcome Message
- Merchant Administration Portal
  - + Usage Statistics
  - + User Management
  - + Much More
- Contact Us Form
- Change Password
- Your own URL
- Real-Time Data View
- 256 Bit Encryption

### ADD:

#### ONLINE PAYMENTS

**\$895**  
(\$1,125 CAD)

All Customer Portal features plus:

- + Online Payments
- + Click-to-Pay
- + Prepayment

Optional:

- + Store Customer Credit Card Token
- + Manage Credit Cards

#### QUICK ORDER ENTRY

**\$1,495**  
(\$1,995 CAD)

All Customer Portal features plus:  
(with or without Online Payments)

- + Cloud-Based Order Entry
- + Submit Orders Directly to Order Entry
- + Live Item Search/Display

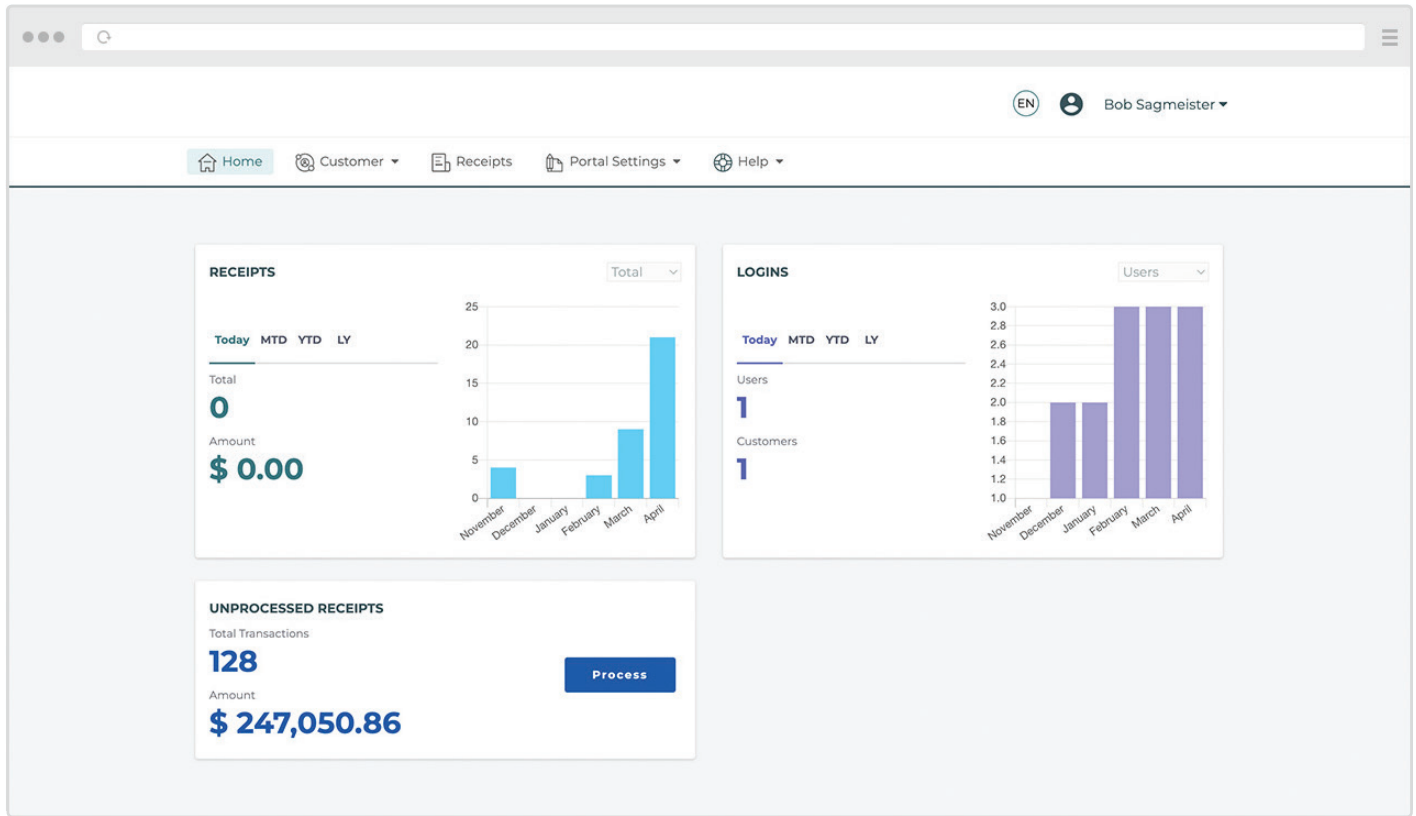
Optional:

- + Display Item Images
- + Display Additional Item Details

**ONE-TIME \$175 SETUP FEE (\$200 CAD)**

\*Requires a Sage 300 user license.

# Merchant Administration Portal



- Manage users
- Control portal functionality
- View usage statistics
- Much more

## Ready to get started?

Go to [www.north49.com/customerportal](http://www.north49.com/customerportal) or call us at **+1 (888) 599-1115** or **speak with your Sage 300 Partner**. We'll answer all of your questions and help you choose the right components to best serve your customers and your business.